

# Friends & Fiber Works



## Bedouin Bag

Make the Bedouin Bag With Sandy Joyner

**When:** Every other Saturday from 4 to 6pm.

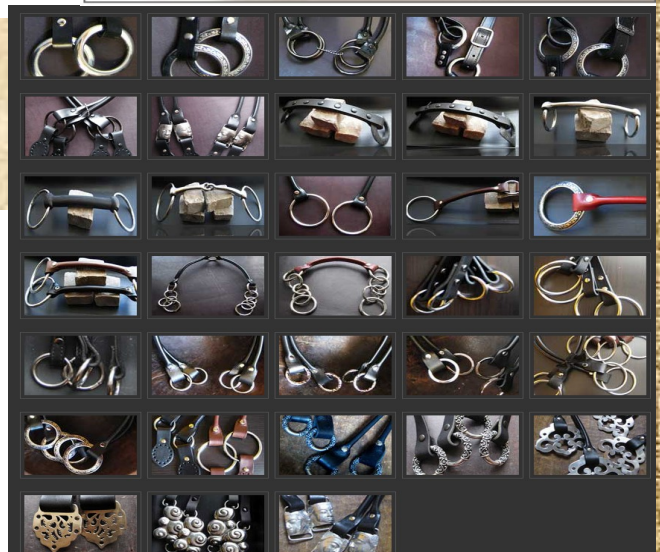
These bags are beautiful! You can choose your color, handles and make a unique purse-custom just for you.

Class cost:\$10.00 per session,  
Call the shop to sign up!



## Jul Hardware

Just in..... Fabulous hardware custom made by Jul. Stop by to check out the wonderful selection of goodies we are carrying!



# May Calendar

Please check out our full calendar, online for a complete listing of classes.

[www.friendsandfiberworks.com](http://www.friendsandfiberworks.com)



May 14, 2011

Needle Felt "the Spinner" Rabbit with  
Debbie Trantham

1:00pm-6:00pm

Class fee 75.00

Materials fee 40.00

Total 115.00

## Upcoming shows

May 7th Maggie Valley Heritage  
Day, come spin with us all day

May 19-22 Carolina Fiber Fest,  
in Raleigh, NC and yes we will  
build another woman cave.

## Great American Afghan Class with Sandy



Every other week throughout this year.  
Saturdays 4:00pm-6:00pm The book may  
be purchased at the shop.

\$10.00 per session



# Friends and Fiberworks Summer Retreat



[www.friendsandfiberworks.com](http://www.friendsandfiberworks.com)



828-633-2500

asheville, north carolina

July 15-17

We still have space in our classes, check our website for a complete listing



Check out these fun novelty yarns  
Triana & Rios by Fil Katia  
Marina & Tundra by Rozetti  
And many more.....

Summer Retreat

July 15-17

Friends & Fiberworks  
Biltmore Square Mall  
800 Brevard Road  
Asheville, NC 28806

Phone: 828 633-2500

Fax: 828 6705-015

E-mail:

[friendsandfiberworks@gmail.com](mailto:friendsandfiberworks@gmail.com)

[www.friendsandfiberworks.com](http://www.friendsandfiberworks.com)

### What is a Yarn/Fiber Crawl ?

To acquaint all fiber enthusiasts and artists with regional independent retailers and the companies that supply and distribute the yarns and accessories they carry. This is done by creating a self guided itinerary for the exploration of participating stores. The stores participate by creating special promotions, excitement and interest in various fiber mediums. Participating companies share in underwriting the event and contribute full sized samples of their marvelous products which are included in the raffle baskets that are on display at every store along the crawl. There is one raffle basket for every store. Everyone is eligible to enter the Raffle. There is never a charge to go on a crawl, and you go on your own time frame and at your own speed. Every participant on a yarn crawl is entitled to one FREE RAFFLE ticket from each store they visit.

## Asheville's Yarn & Fiber Crawl May 13-15

### May Shop Specials



May 8th-14th *Araucania Yarn 10% off*

May 15th-21st *Everything to make any Noni bag 10% off, yes even hardware included!*



May 22nd-31st *Baby Alpaca Grande 10% off*



New in the shop.....

**CASCADE YARNS**  
DISTRIBUTOR OF FINE YARN